

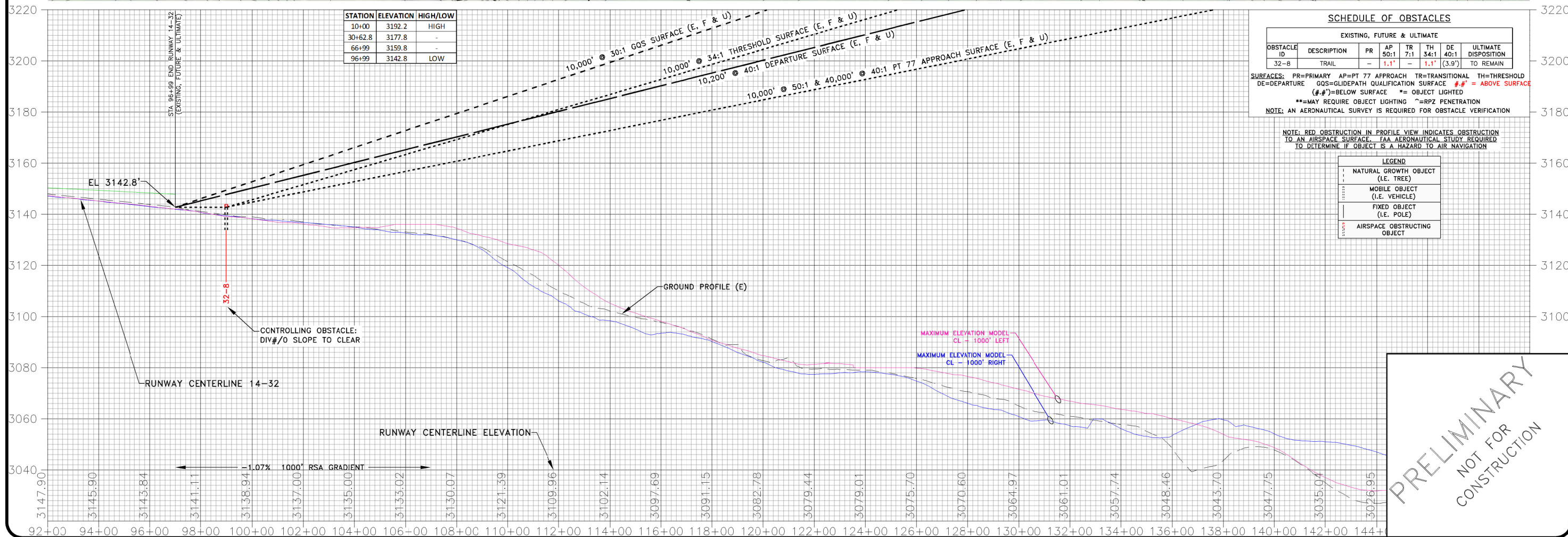
- NOTES:
1. SEE SHEET A-2 FOR AIRPORT & RUNWAY DATA TABLES.
 2. OBSTACLE ELEV. INCLUDE TRAVERSE ELEV. ADJUSTMENTS.
 3. ID'S ASSIGNED TO SIGNIFICANT OBJECTS WITHIN 5' OF A SURFACE.



RAPID CITY REGIONAL AIRPORT

CITY OF RAPID CITY (OWNER)
RAPID CITY, SOUTH DAKOTA

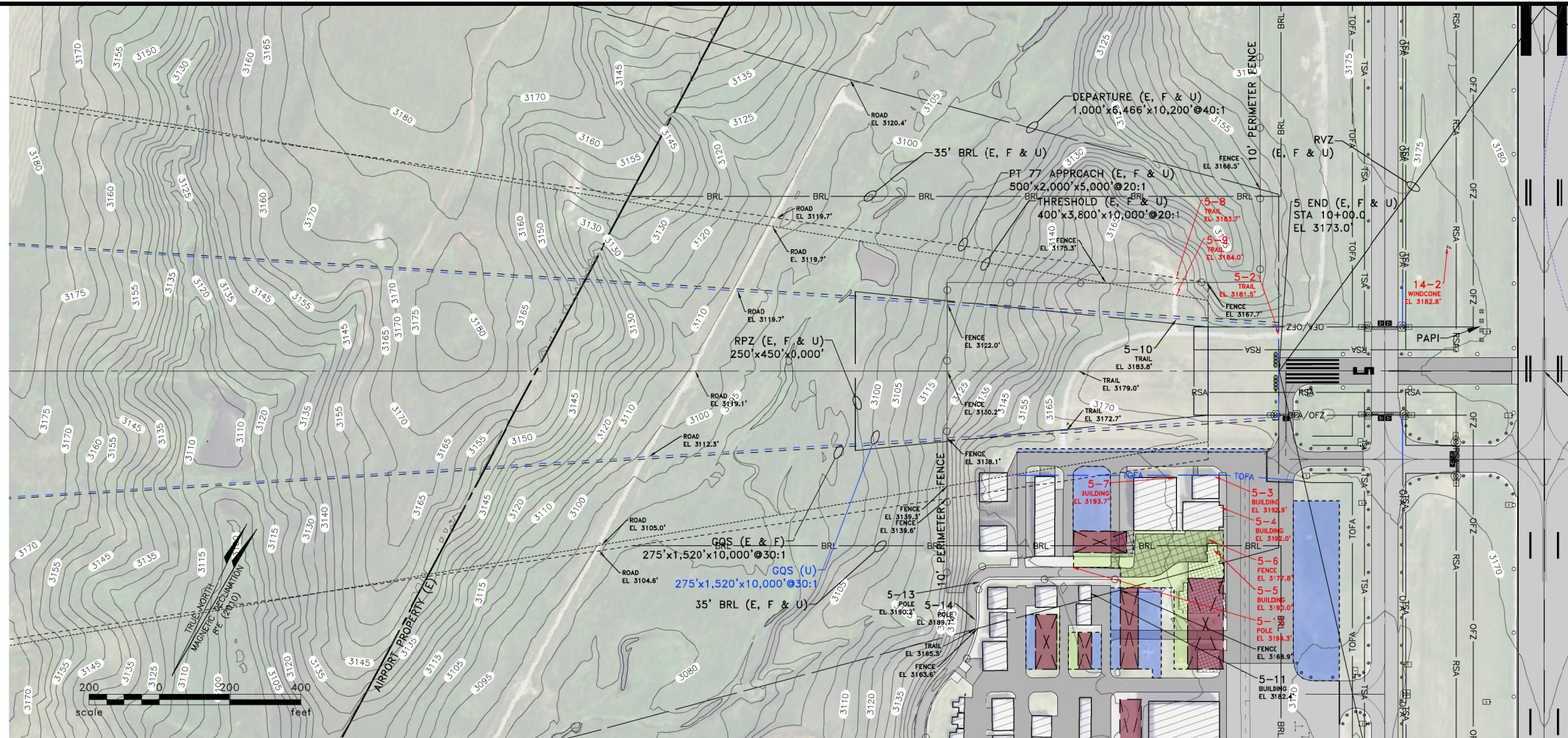
TO BE USED AS A COMPLETE DRAWING SET FOR PLANNING PURPOSES ONLY, NOT FOR CONSTRUCTION



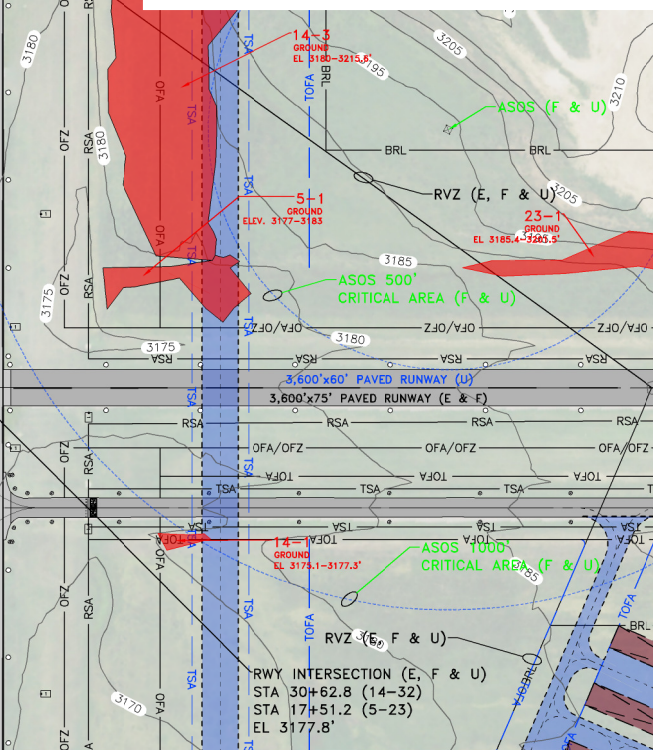
INNER APPROACH SURFACE
RUNWAY 32 END

DRAFTED
TLG
REVIEWED
KP
PROJECT NUMBER
10512113
LAST REVISED DATE
08/20/2015

SHEET
A-17



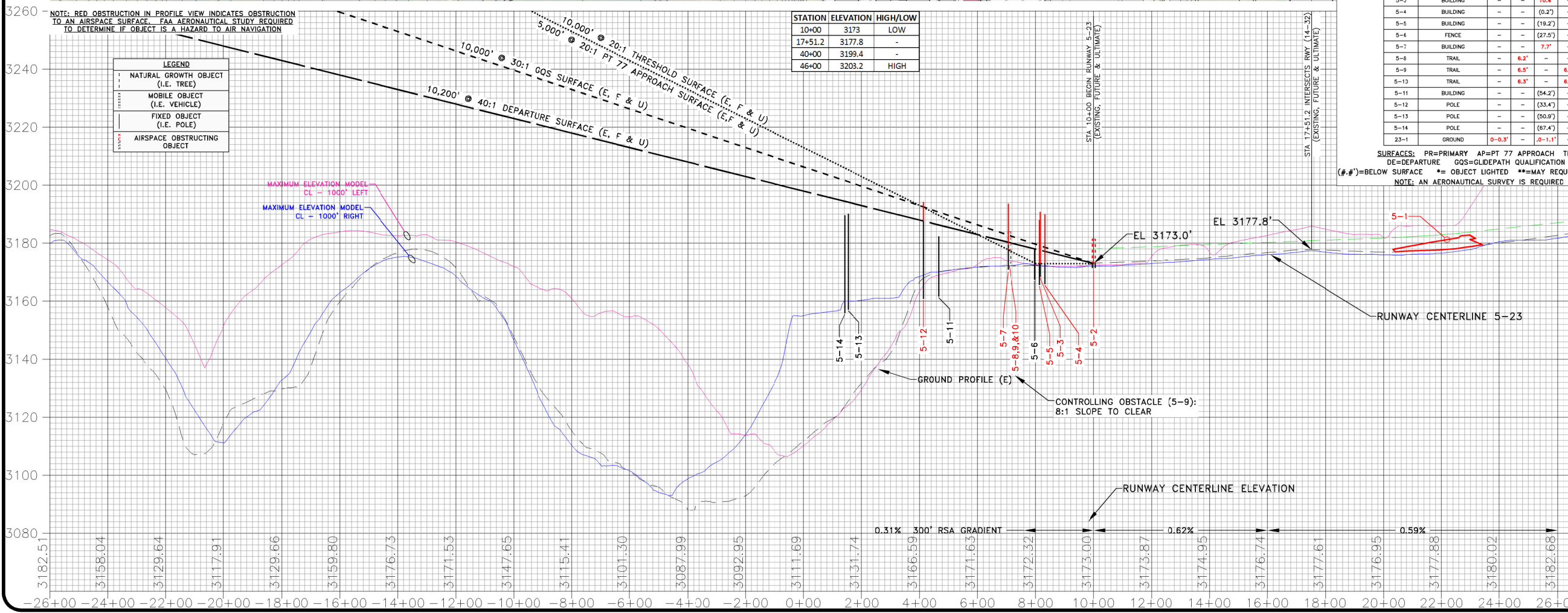
- NOTES:
1. SEE SHEET A-2 FOR AIRPORT & RUNWAY DATA TABLES.
 2. OBSTACLE ELEV. INCLUDE TRAVERSE ELEV. ADJUSTMENTS.
 3. ID'S ASSIGNED TO SIGNIFICANT OBJECTS WITHIN 5' OF A SURFACE.



SCHEDULE OF OBSTACLES

EXISTING, FUTURE & ULTIMATE (E, F & U)							
OBSTACLE ID	DESCRIPTION	PR	AP 20:1	TR 7:1	TH 20:1	GQS 30:1	DE 40:1
5-1	GROUND	0-1.5'	-	-1-1.4'	-	-	-
5-2	TRAIL	8.5'	-	-	-	8.5'	8.5'
5-3	BUILDING	-	-	10.4'	-	-	15.3'
5-4	BUILDING	-	-	(0.2')	-	-	14.7'
5-5	BUILDING	-	-	(19.2')	-	-	12.3'
5-6	FENCE	-	-	(27.5')	-	-	(0.3')
5-7	BUILDING	-	-	7.7'	-	-	13.4'
5-8	TRAIL	-	-	6.2'	-	-	3.4'
5-9	TRAIL	-	-	6.5'	-	6.5'	3.7'
5-10	TRAIL	-	-	6.3'	-	6.3'	3.5'
5-11	BUILDING	-	-	(54.2')	-	-	(3.9')
5-12	POLE	-	-	(33.4')	-	-	6.6'
5-13	POLE	-	-	(50.9')	-	-	(4.0')
5-14	POLE	-	-	(67.4')	-	-	(4.8')
23-1	GROUND	0-0.3'	-	-0-1.1'	-	-	-

SURFACES: PR=PRIMARY AP=PT 77 APPROACH TR=TRANSITIONAL TH=THRESHOLD
DE=DEPARTURE GQS=GLIDEPATH QUALIFICATION SURFACE #.#' = ABOVE SURFACE
(#.#')=BELOW SURFACE * = OBJECT LIGHTED **=MAY REQUIRE OBJECT LIGHTING ~ =RPZ PENETRATION
NOTE: AN AERONAUTICAL SURVEY IS REQUIRED FOR OBSTACLE VERIFICATION



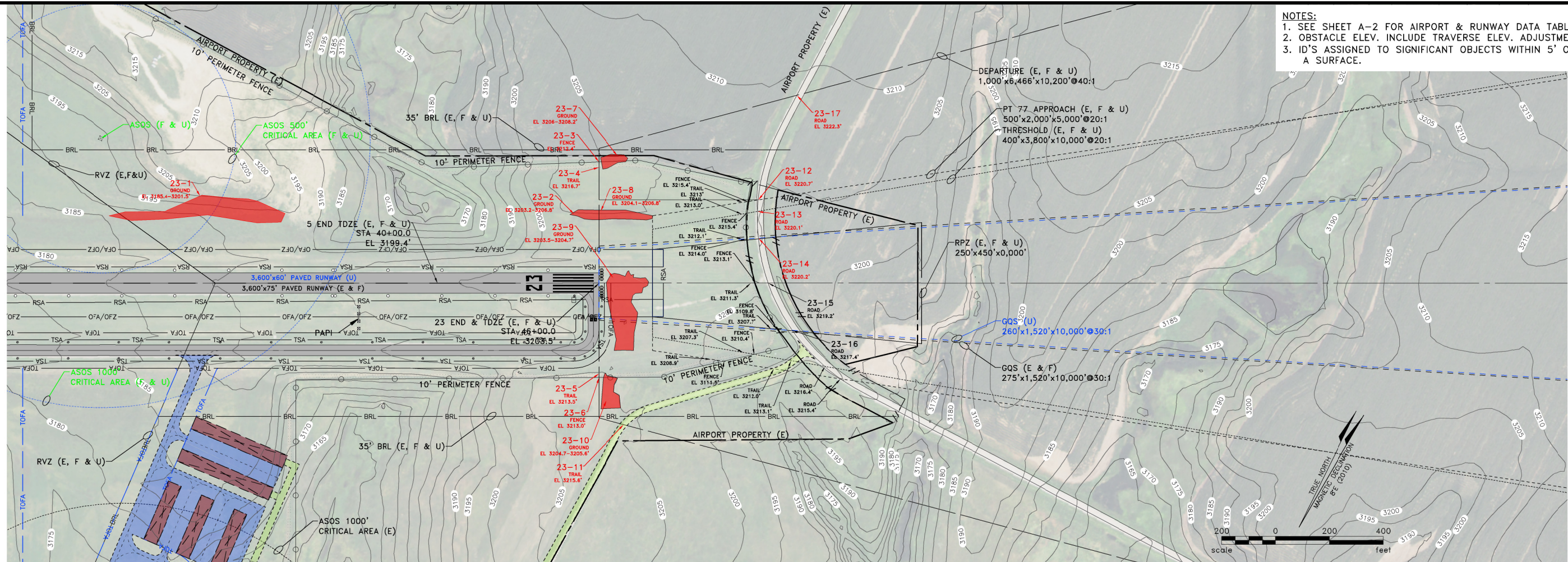
PRELIMINARY
NOT FOR
CONSTRUCTION

RAPID CITY REGIONAL AIRPORT

CITY OF RAPID CITY (OWNER)
RAPID CITY, SOUTH DAKOTA

INNER APPROACH SURFACE
RUNWAY 5 END

DRAFTED
TLG
REVIEWED
KP
PROJECT NUMBER
10512113
LAST REVISED DATE
08/20/2015
SHEET
A-18



SCHEDULE OF OBSTACLES

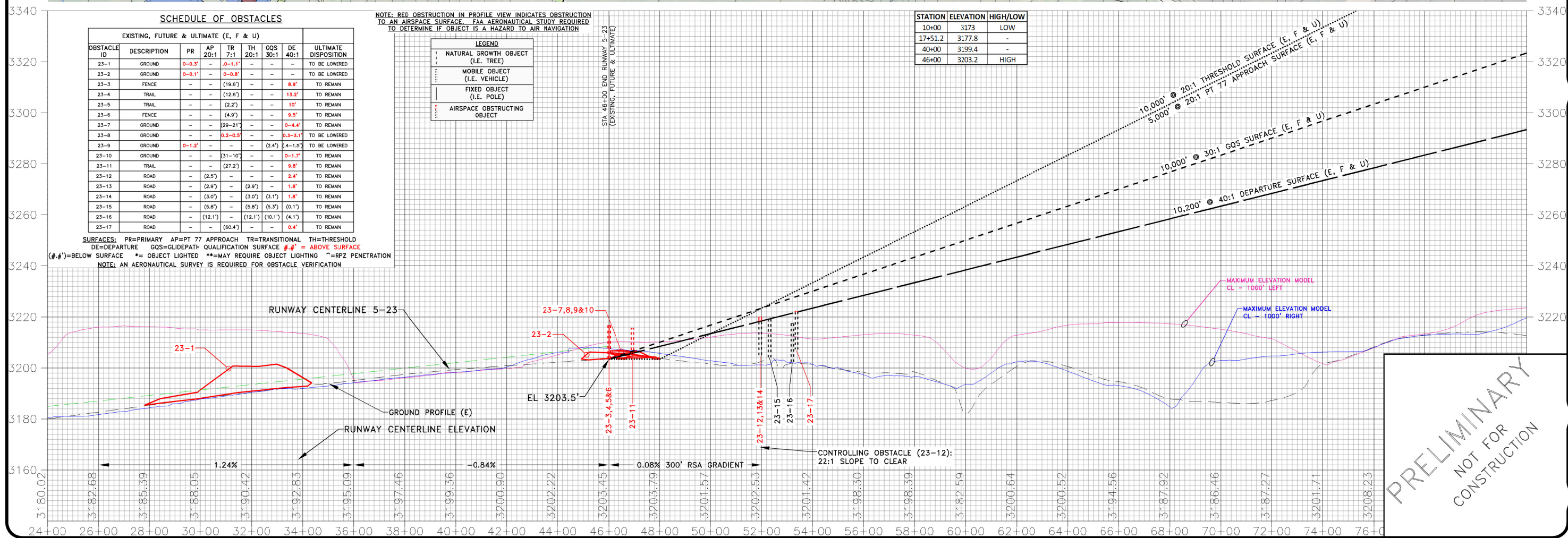
EXISTING, FUTURE & ULTIMATE (E, F & U)						
OBSTACLE ID	DESCRIPTION	PR	AP 20:1	TR 7:1	TH 20:1	DE 40:1
23-1	GROUND	0-0.3'	-	0-1.1'	-	-
23-2	GROUND	0-0.1'	-	0-0.8'	-	-
23-3	FENCE	-	-	(19.6')	-	8.9'
23-4	TRAIL	-	-	(12.6')	-	13.2'
23-5	TRAIL	-	-	(2.2')	-	10'
23-6	FENCE	-	-	(4.9')	-	9.5'
23-7	GROUND	-	-	(29-21')	-	0-4.4'
23-8	GROUND	-	-	0.2-0.5'	-	0.3-3.1'
23-9	GROUND	0-1.2'	-	-	(2.4')	(4-1.5')
23-10	GROUND	-	-	(31-10')	-	0-1.7'
23-11	TRAIL	-	-	(27.2')	-	9.8'
23-12	ROAD	-	-	(2.5')	-	2.4'
23-13	ROAD	-	-	(2.9')	-	1.8'
23-14	ROAD	-	-	(3.0')	(3.1')	1.8'
23-15	ROAD	-	-	(5.8')	(5.3')	(0.1')
23-16	ROAD	-	-	(12.1')	(10.1')	(4.1')
23-17	ROAD	-	-	(60.4')	-	0.4'

SURFACES: PR=PRIMARY AP=PT 77 APPROACH TR=TRANSITIONAL TH=THRESHOLD
DE=DEPARTURE GQS=GLIDEPATH QUALIFICATION SURFACE #, #' = ABOVE SURFACE
(#, #')=BELOW SURFACE * = OBJECT LIGHTED **=MAY REQUIRE OBJECT LIGHTING ~ = RPZ PENETRATION
NOTE: AN AERONAUTICAL SURVEY IS REQUIRED FOR OBSTACLE VERIFICATION

NOTE: RED OBSTRUCTION IN PROFILE VIEW INDICATES OBSTRUCTION TO AN AIRSPACE SURFACE. FAA AERONAUTICAL STUDY REQUIRED TO DETERMINE IF OBJECT IS A HAZARD TO AIR NAVIGATION

LEGEND	
	NATURAL GROWTH OBJECT (I.E. TREE)
	MOBILE OBJECT (I.E. VEHICLE)
	FIXED OBJECT (I.E. POLE)
	AIRSPACE OBSTRUCTING OBJECT

STATION	ELEVATION	HIGH/LOW
10+00	3173	LOW
17+51.2	3177.8	-
40+00	3199.4	-
46+00	3203.2	HIGH



RAPID CITY REGIONAL AIRPORT

CITY OF RAPID CITY (OWNER)
RAPID CITY, SOUTH DAKOTA

TO BE USED AS A COMPLETE DRAWING SET FOR PLANNING PURPOSES ONLY, NOT FOR CONSTRUCTION

INNER APPROACH SURFACE
RUNWAY 23 END

DRAFTED
TLG
REVIEWED
KP
PROJECT NUMBER
10512113
LAST REVISED DATE
08/20/2015

SHEET
A-19

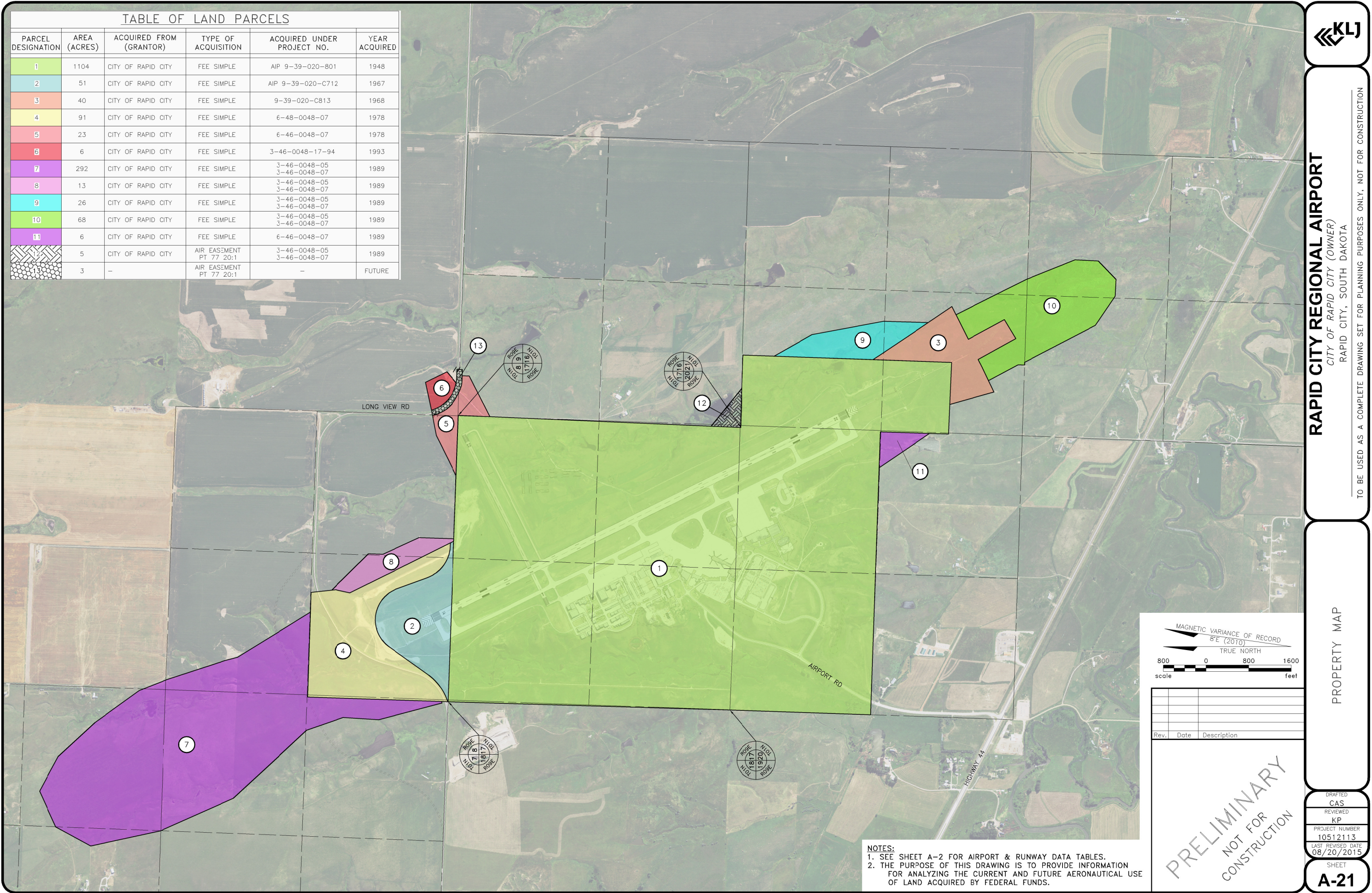
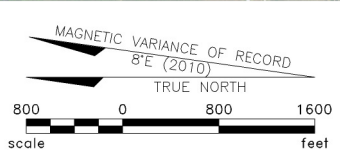


TABLE OF LAND PARCELS					
PARCEL DESIGNATION	AREA (ACRES)	ACQUIRED FROM (GRANTOR)	TYPE OF ACQUISITION	ACQUIRED UNDER PROJECT NO.	YEAR ACQUIRED
1	1104	CITY OF RAPID CITY	FEE SIMPLE	AIP 9-39-020-801	1948
2	51	CITY OF RAPID CITY	FEE SIMPLE	AIP 9-39-020-C712	1967
3	40	CITY OF RAPID CITY	FEE SIMPLE	9-39-020-C813	1968
4	91	CITY OF RAPID CITY	FEE SIMPLE	6-48-0048-07	1978
5	23	CITY OF RAPID CITY	FEE SIMPLE	6-46-0048-07	1978
6	6	CITY OF RAPID CITY	FEE SIMPLE	3-46-0048-17-94	1993
7	292	CITY OF RAPID CITY	FEE SIMPLE	3-46-0048-05 3-46-0048-07	1989
8	13	CITY OF RAPID CITY	FEE SIMPLE	3-46-0048-05 3-46-0048-07	1989
9	26	CITY OF RAPID CITY	FEE SIMPLE	3-46-0048-05 3-46-0048-07	1989
10	68	CITY OF RAPID CITY	FEE SIMPLE	3-46-0048-05 3-46-0048-07	1989
11	6	CITY OF RAPID CITY	FEE SIMPLE	6-46-0048-07	1989
12	5	CITY OF RAPID CITY	AIR EASEMENT PT 77 20:1	3-46-0048-05 3-46-0048-07	1989
13	3	-	AIR EASEMENT PT 77 20:1	-	FUTURE

NOTES:
1. SEE SHEET A-2 FOR AIRPORT & RUNWAY DATA TABLES.
2. THE PURPOSE OF THIS DRAWING IS TO PROVIDE INFORMATION FOR ANALYZING THE CURRENT AND FUTURE AERONAUTICAL USE OF LAND ACQUIRED BY FEDERAL FUNDS.



Rev.	Date	Description

PRELIMINARY
NOT FOR
CONSTRUCTION

RAPID CITY REGIONAL AIRPORT
CITY OF RAPID CITY (OWNER)
RAPID CITY, SOUTH DAKOTA

TO BE USED AS A COMPLETE DRAWING SET FOR PLANNING PURPOSES ONLY, NOT FOR CONSTRUCTION

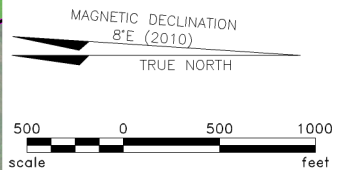
PROPERTY MAP

DRAFTED
CAS
REVIEWED
KP
PROJECT NUMBER
10512113
LAST REVISED DATE
08/20/2015

SHEET
A-21



NOTES:
1. SEE SHEET A-2 FOR AIRPORT & RUNWAY DATA TABLES.
2. ZONING DATA FROM CITY OF RAPID CITY "RAPID MAP" ZONING ORDINANCE (2015) AND PENNINGTON COUNTY PARCELS.



LEGEND

- AGRICULTURE
- AERONAUTICAL
- COMMERCIAL
- RESIDENTIAL
- ULTIMATE DEVELOPMENT
- AIRSPACE AVIGATION EASEMENT
- EXISTING RPZ
- FUTURE/ULTIMATE RPZ
- CITY BOUNDARY
- NON-MOVEMENT AREA
- MOVEMENT AREA
- EXISTING AIRPORT PROPERTY
- OFA— RUNWAY OBJECT FREE AREA (OFA)
- RSA— RUNWAY SAFETY AREA (RSA)

Rev.	Date	Description

PRELIMINARY
NOT FOR
CONSTRUCTION

RAPID CITY REGIONAL AIRPORT
CITY OF RAPID CITY (OWNER)
RAPID CITY, SOUTH DAKOTA

TO BE USED AS A COMPLETE DRAWING SET FOR PLANNING PURPOSES ONLY, NOT FOR CONSTRUCTION

LAND USE PLAN

DRAFTED	TLG
REVIEWED	KP
PROJECT NUMBER	10512113
LAST REVISED DATE	08/20/2015
SHEET	A-20

© KLJ 2015