

Rapid City Regional Airport

Master Plan Update

Airline Focus Group Kickoff Meeting

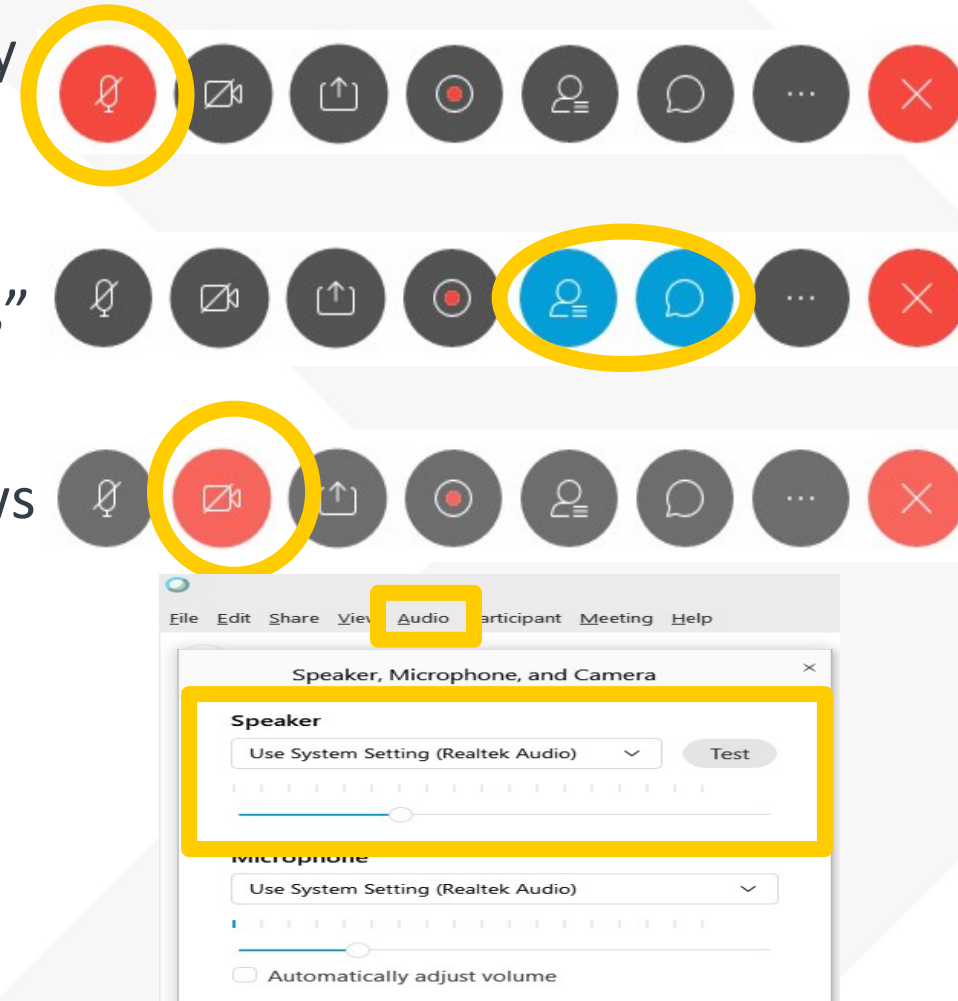
May 12, 2020



ENGINEERING, REIMAGINED

WebEx Controls and Etiquette

- Bottom center of your screen is where you will find the icons. If they disappear, click anywhere on the screen.
- Please keep microphone muted until invited to speak by WebEx Leader.
- Please use “Chat” feature and select “everyone” if you desire to comment/ask a question and the “Participants” to see who is talking/commenting.
- Reminder that you may have your video “on” that allows you and your actions to be visible to others on this WebEx.
- If you cannot hear please select *Audio* on the top left and adjust volume.



Agenda

- Introductions
- Airport Master Plan
- Focus Group Objectives
- Facility Discussions



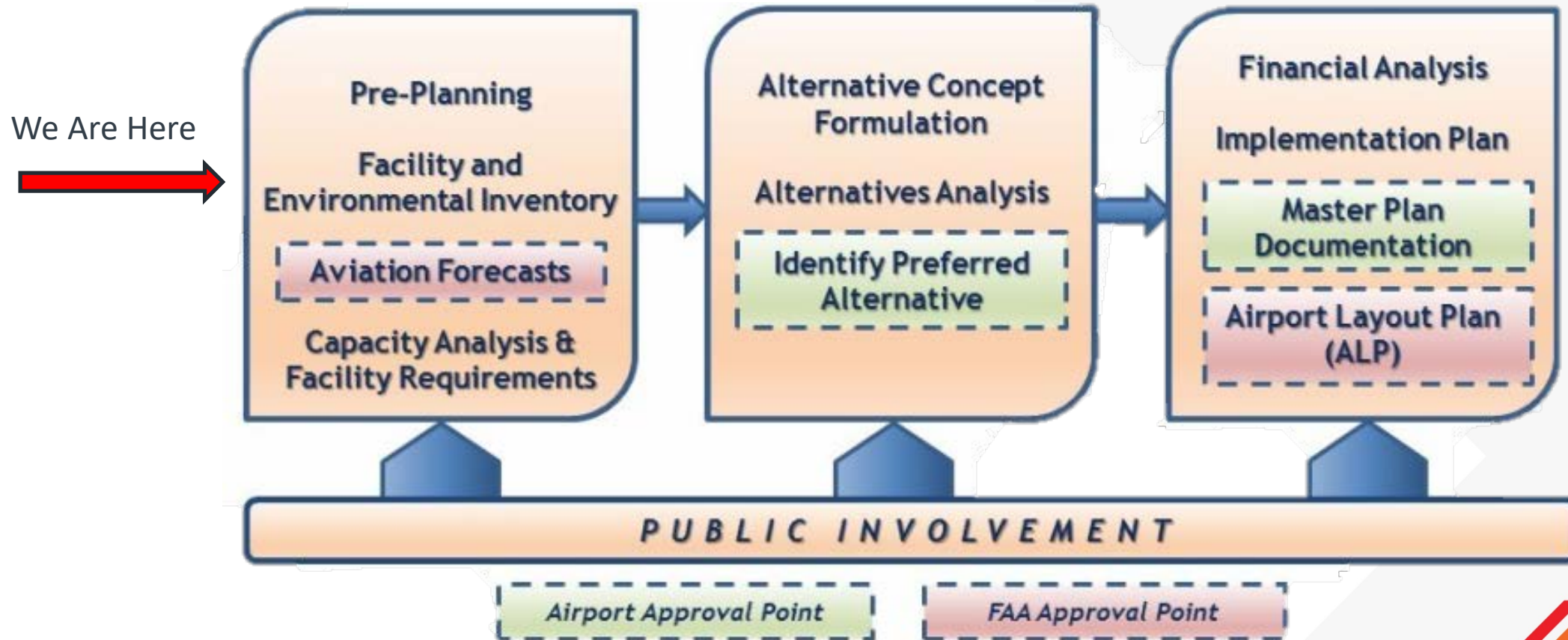
ENGINEERING, REIMAGINED

Airport Master Plan

- “Road Map” for meeting aviation demands
- Preserves flexibility to respond to the future
- Allows airport to cost-effectively keep pace with aviation growth
- Considers environmental and socioeconomic impact of development
- Why is a Master Plan Updated needed now?
 - Last Airport Master Plan completed in 2014 but forecasted numbers have been surpassed
 - Continuity of operations – develop a plan to eliminate or minimize closure time of RAP’s primary runway. Examples: Reconstruction, Aircraft Incidents, etc.



Airport Master Plan



Focus Group

- Participate in two meetings, each anticipated to last an hour.
- Meeting 1 (today)
 - Verify existing facilities
 - Identify any issues/challenges/successes
 - Let us know of any expected changes in the way you operate that should be considered for this plan
- Meeting 2 (late summer/early fall)
 - Discuss draft alternatives
 - Provide any updates on needs or expected changes



ENGINEERING, REIMAGINED



Airfield

- Runway Needs / Continuity of Operations
- Instrument Approach Capability

- Are there current challenges or issues?
- What are some successes?
We want maintain facilities and systems working well
- Do you have any upcoming changes in the way you operate that should be considered for this plan?



ENGINEERING, REIMAGINED



Airside Terminal Area

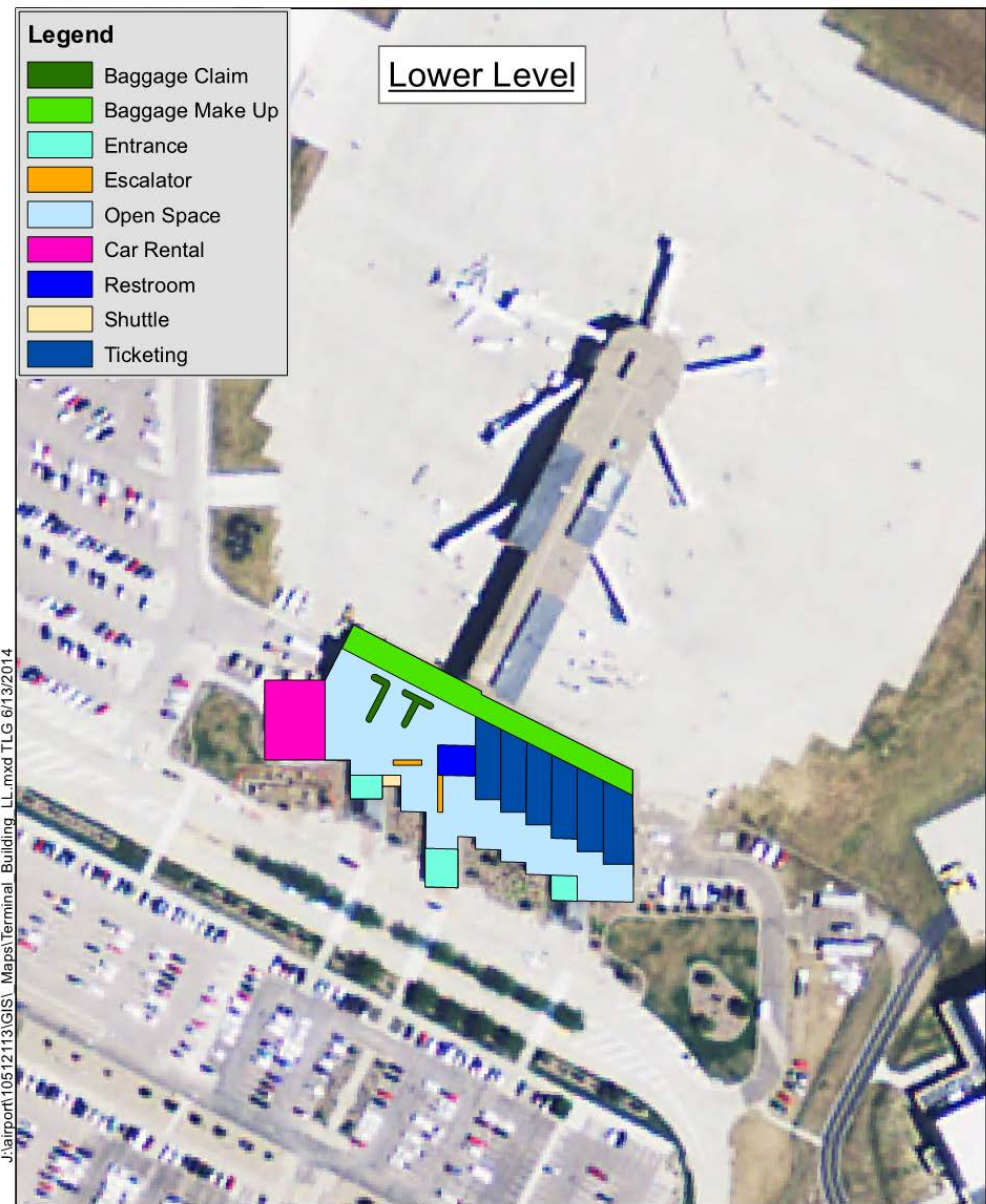
- Terminal Apron Space
- Lead In Lines
- De-icing
- Jet Bridges
- Remain Overnight Parking
- Baggage Processing

- **Are there current challenges or issues?**
- **What are some successes?**
We want maintain facilities and systems working well
- **Do you have any upcoming changes in the way you operate that should be considered for this plan?**

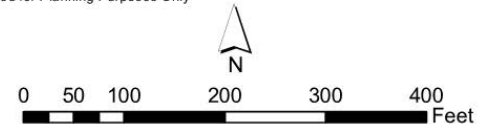


ENGINEERING, REIMAGINED

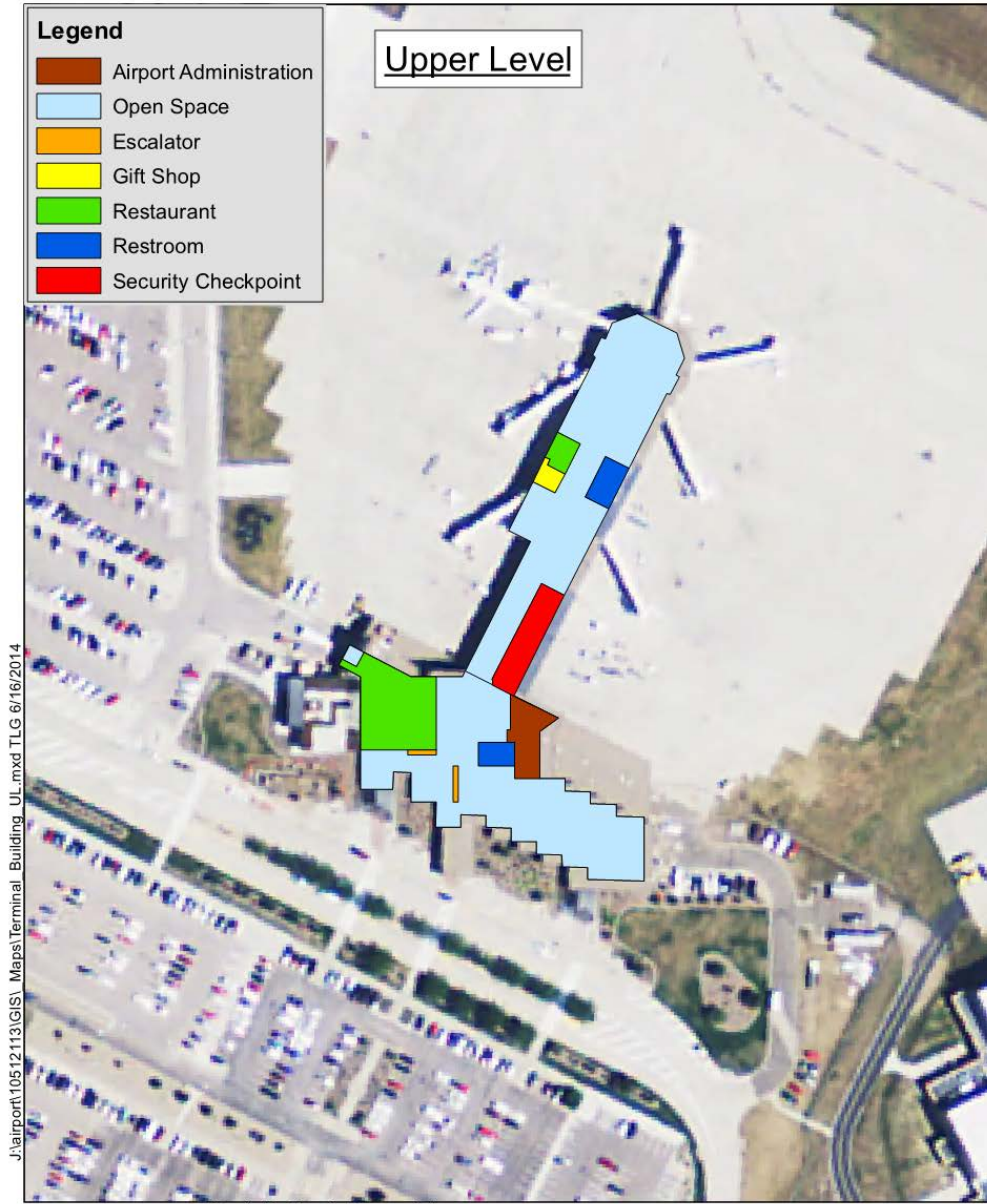
J:\airport10512113\GIS\ Maps\Terminal Building_LL.mxd TLG 6/13/2014



*Intended for Planning Purposes Only



Rapid City Regional Airport
Passenger Terminal
Building Map
Exhibit T-1



*Intended for Planning Purposes Only



Rapid City Regional Airport
Passenger Terminal
Building Map
Exhibit T-2

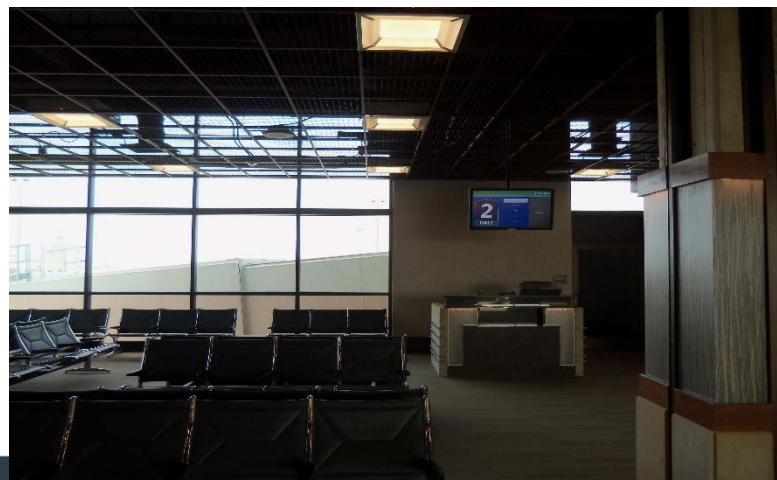
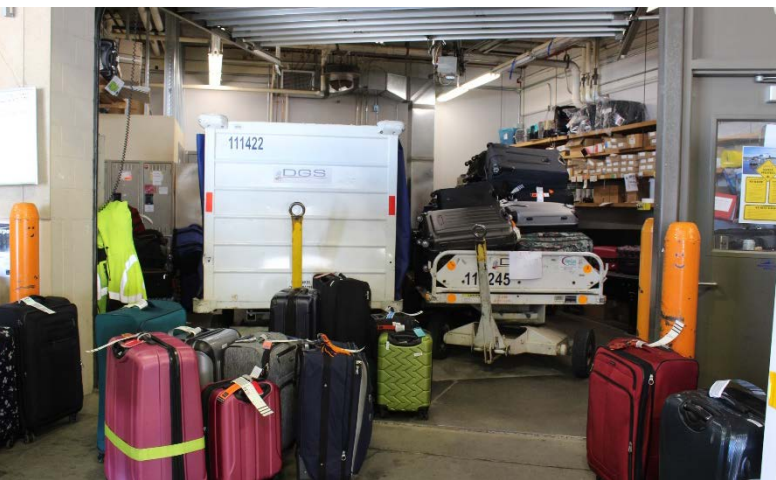
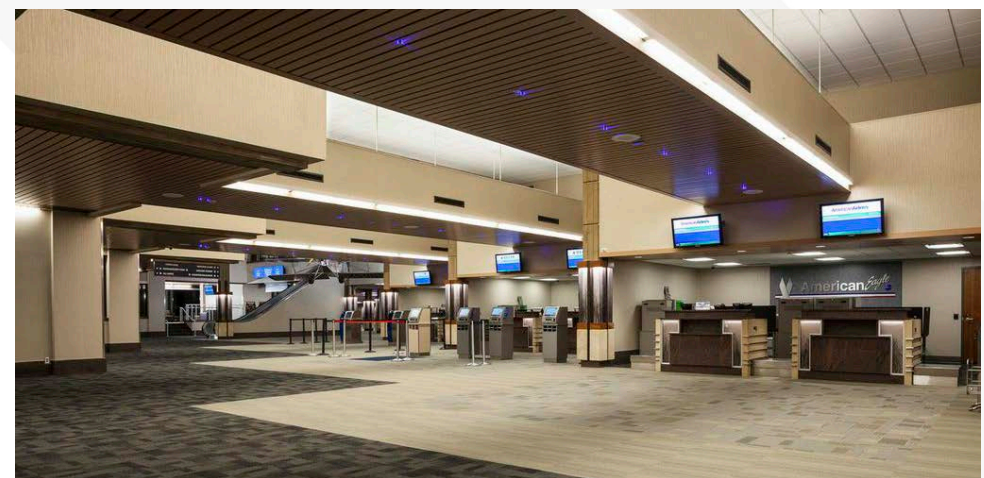
Passenger Terminal Area

- Ticketing
- Airline Gates
- Baggage Processing
- Airline Offices
- Employee Parking



ENGINEERING, REIMAGINED

Any Other Facility
Needs, Issues or
Successes We Haven't
Covered?



Next Steps

- Aviation Activity Forecasts
- Facility Requirements
- Alternatives
 - Second Focus Group meeting will be held after alternatives have been developed (late summer / early fall).



ENGINEERING, REIMAGINED

Questions & Comments

Matt Nisbet

Aviation Planner

matt.nisbet@kljeng.com

701.355.8449



ENGINEERING, REIMAGINED